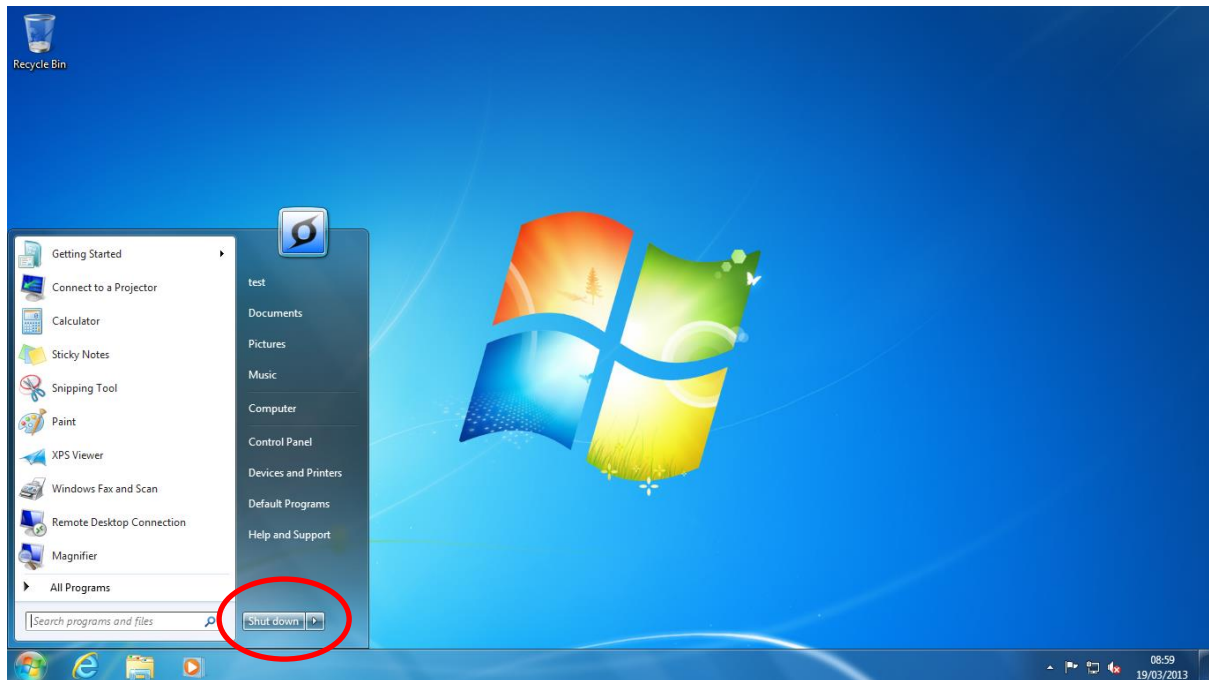


Windows 7 Recovery Manual

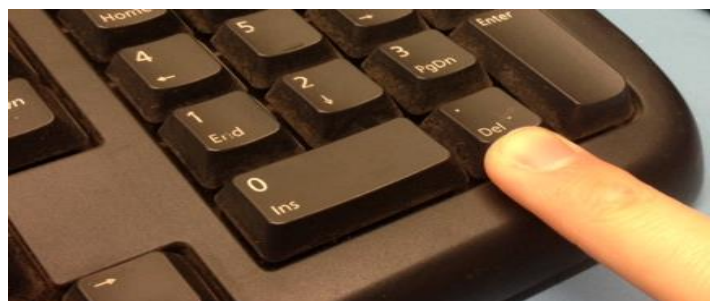
Step 1 >

Insert the Windows 7 Recovery Disc into the disc tray. Once you've completed that task, you will need to shut down the system.



Step 2 >

Once the system is completely shut down, power the machine back up and make sure you tap the **Del.** Button several times to gain access to the **UEFI BIOS**.



Step 3 >

Once you are in the **UEFI BIOS**, you need to make sure the following settings are set:

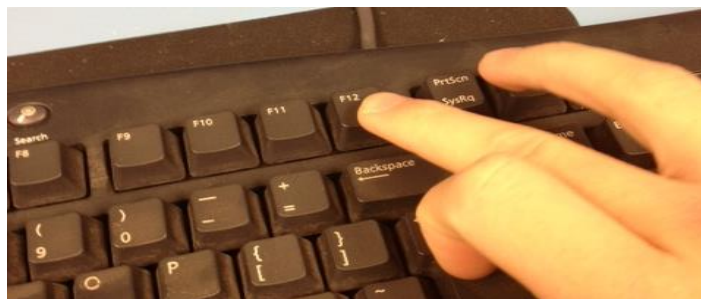
OS TYPE = "OTHER OS" ... CSM Support = "Enabled"

...Once you have completed that step, you will need to save your changes and exit. To find this you can either;

- Locate the **"Save and Exit"** tab and follow the instructions as instructed.
- Press **F10** for the Keyboard Shortcut to quickly access the **Save Changes and Exit Option**.

Step 4 >

Once you have clicked **"Yes"** to save and exit, you need to make sure you boot to the **Boot Menu**. The boot menu key will display on screen; which you will need to press repeatedly to gain access.



... Once you get to the Boot Menu, you will need to select the Boot Device. The Boot Device needed is the one with “DVDRW” in the description. Once you have selected this, it should Boot to the disc.

IMPORTANT - Now watching the screen as soon as the prompt message comes up “Press Any key to Boot to CD or DVD”, please press a key. If you miss this, it will boot into Windows, you will then need to start the steps again unfortunately.

Step 5 >

Once you have selected the boot device, you will see a Command Prompt (“**Administrator: Zoostorm Factory Restore**”) on screen. Read and follow the instructions. To begin this process, you will need to type in the letter “**Y**” and click enter.



THIS PROCESS TAKES UP TO 10-15 MINUTES

```
Administrator: Zoostorm Factory Restore
DO NOT SWITCH OFF OR RESTART YOUR PC
*****
Microsoft DiskPart version 6.1.7600
Copyright (C) 1999-2008 Microsoft Corporation.
On computer: MININT-P7S5RMU

Disk 0 is now the selected disk.
DiskPart succeeded in cleaning the disk.
DiskPart successfully converted the selected disk to MBR format.
DiskPart succeeded in creating the specified partition.
Partition 1 is now the selected partition.
100 percent completed
DiskPart successfully formatted the volume.
DiskPart successfully assigned the drive letter or mount point.
```

```
Administrator: Zoostorm Factory Restore
DiskPart successfully formatted the volume.
DiskPart successfully assigned the drive letter or mount point.
Leaving DiskPart...

-----
ROBOCOPY      ::      Robust File Copy for Windows
-----

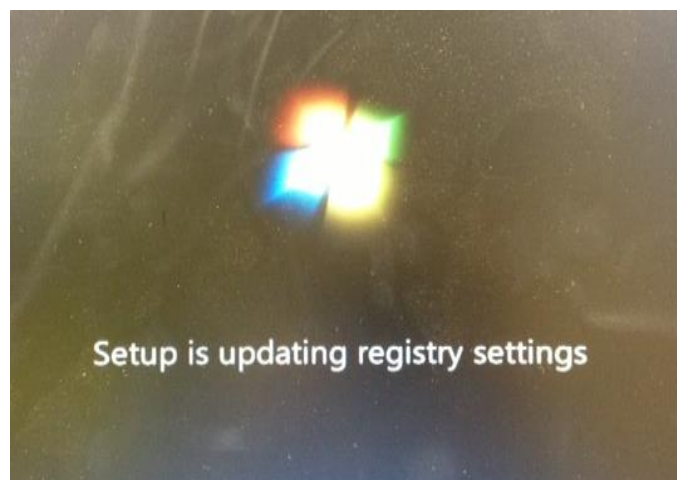
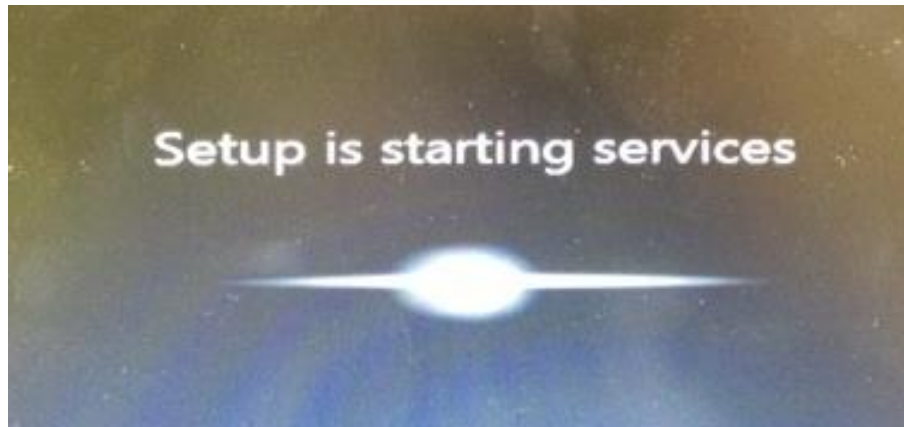
Started : Tue Mar 19 09:05:27 2013
Source  = f:\install\images\
Dest    = r:\
Files   = *.*
Options : *.* /COPY:DAT /R:1000000 /W:30

1.3%      New File          1      f:\install\images\
                    5.7 g      install.win
```

Step 6 >

Once this process is complete, continue to wait whilst your system is setting and updating up your registry settings and starting services.





Step 7 >

When your system has finished setting up and updating the starting services and registry settings etc., you will run through the setup settings for Windows. Please follow all instructions on screen. Once you have completed all of these steps, your recovery is complete.

Please don't hesitate to contact our Technical Support team if you have any queries.

Contact Zoostorm Service and Support Team

Have you located your Serial Number first?

Telephone: 0844 800 6183

Email: support@zoostorm.co.uk

Downloads: <http://www.downloads.zoostorm.com>

Web: <http://tinyurl.com/zoostormtechnical>